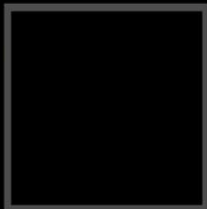


**USER
MANUAL**



HIGH RESOLUTION VIDEO RECORDER

Table of contents

Product Feature.....	1	How to turn off	7
Front View.....	3	Start recording	8
Side View.....	4	Recording operation.....	8
Back View.....	5	Setting recording resolution	8
Getting Started	6	Setting continuous overwrite recording.....	9
How to connect it to PC	6	Mute mode.....	9
How to charge the battery.....	6	Lock controler.....	9
Memory Card Installation...7		Setting time.....	10
Power on/ Power off	7	Connect to PC.....	12
How to turn on	7	Play Video.....	13

Table of contents

Specification.....	14
Recording Error.....	15
Car Installation.....	16
Bike Installation.....	17
Optional accessories	18
Frequent Q & A.....	19

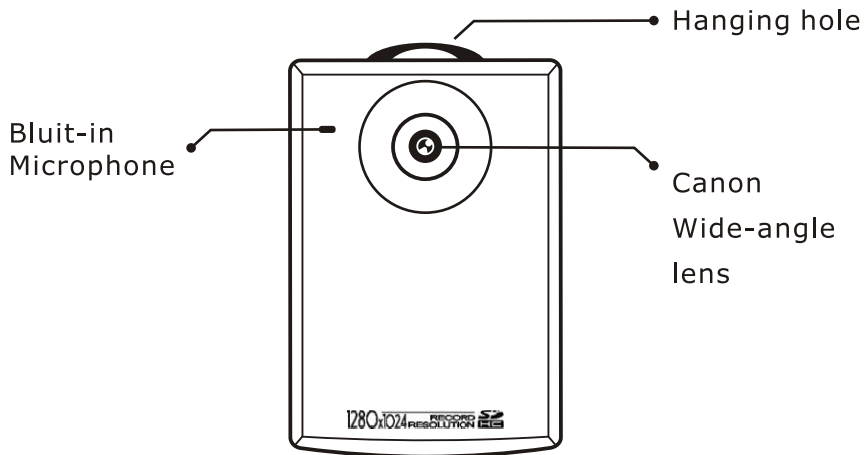
Product Feature

- The world 1st 1280x1024 highest resolution recorder , which exceed all Digital Video recorder. To clearly record everything in your life.
- For home surveillance use , it can overtake the typical surveillance equipments and bring you high efficiency. Its high resolution of 1280x1024 that won't cause any blur on the frame and can clearly recognize the faces or car plate.
- There are three types of mounts can support. No matter which place you would like to install at.
- For outdoor recreation use , or surveillance use , it offers a variety of applications. For instance , police surveillance , car driving recorder , or home surveillance system. It is the best and clear recording picture to satisfy every needs of living.
- The record starts recording as soon as the car powered on.
- It goes with a strap , you can take it with you and capture every beautiful moments.

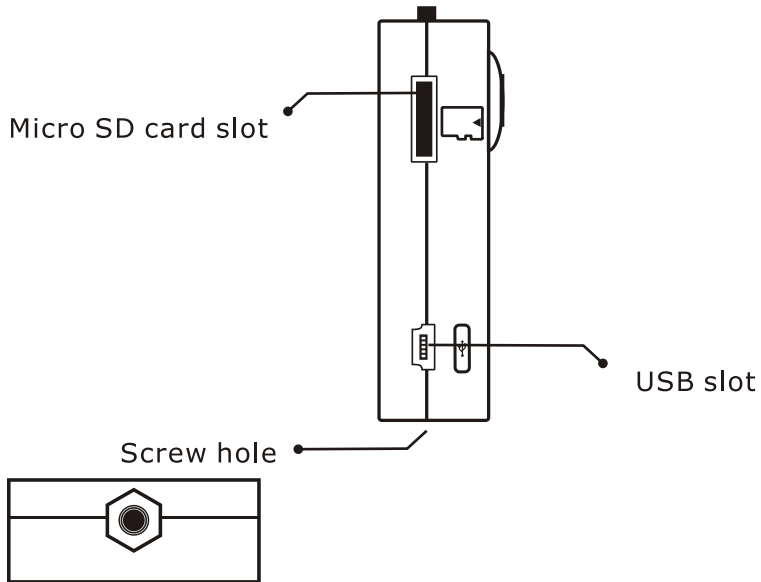
Product Feature

- Use a Micro SD memory card , its high capacity can support up to 32GB.
- Continuous recording function : When the storage space is full , it can automatically cover the earlier segment.
- Can connect directly to computer , and download the recording files.
- Built-in rechargeable battery of 1100mAh/ 3.7v. Can be charged via USB charger.
- External power supply offers a non-stop recording.
- Once the external power is down , it will switch to battery to supply the power.

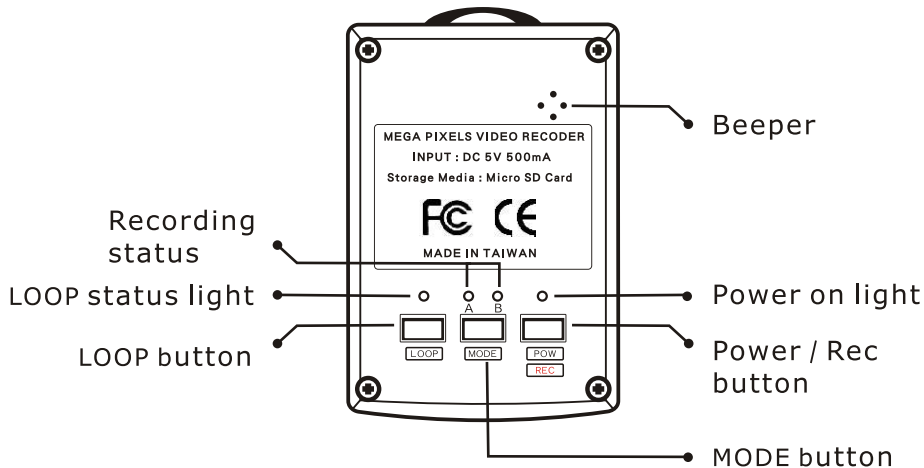
© Front View



© Side View

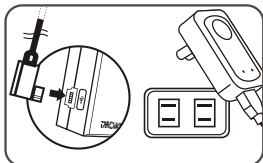


© Back View



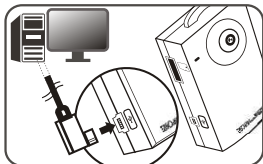
Getting Started

Note : Because the recorder is powered by a built-in Lithium battery , so please charge it until the battery is full as you first time use it.



How to connect it to PC

Charging : When the recorder is connecting to PC , the AB indicators will be flashing. And after the battery has been charged well , the AB indicator LED will not flash any more and stay lighting up. (Figure 1)



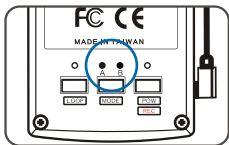
How to charge the battery

Situation 1 : While the recorder is in charging (memory card installed) , it will automatically turn on and begin to record.

Solution : Please turn off the recorder after it is connected to the charger adaptor. (the whole complete charging time is 2.5 hours in this case ; and there won't be any light indication)

Situation 2 : While the recorder is in charging (memory card not installed) , it will automatically turn on and begin to record.

Solution : Because there is no memory card inside , the light indication (POW, A, B, LOOP LED) will keep flashing. (the whole complete charging time is 2.5 hours in this case ; and its light indication won't change while it is charging)



(Figure 1)

Note: If it is connecting to the charger , the recorder must be in “off state” .Additionally ,the charging time will be around 2.5 hours ,and won't reveal any status indication.

Memory Card Installation

- ▶ When you first time use the “Micro SD Card” , please follow the instruction as below:

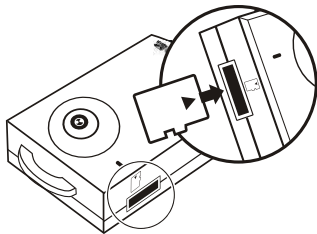
Please format it as FAT format when the memory card size is 2GB.

Please format it as FAT32 format when the memory card size is above 4GB.

Please turn off the recorder first , and follow the right installation to insert the Micro SD Card into the slot.

Note:

The memory card may be damaged if power is interrupted any operation are performed during the operating.



- ▲ Instruction of inserting a Micro SD Card into the record

Power on/ Power off

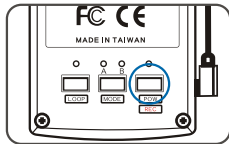
Turn on

When it is Off condition , long press Power/Rec button for 2 seconds , the indicator will light up , and will switch it on. (Figure 1)

Turn off

When the recorder power is on , by long pressing Power/ Rec. Button , and it will be turned off after 2 seconds.

(Figure 1) ▶



Start recording

When the recorder power is on , the Power/Rec indicator LED will light up. At the meanwhile , press the Power/Rec button , the LED will be blinking.

Note: Do not record less than 1 minute.

When it is in recording (the power/rec LED indicator is flashing) , press Power/Rec button , the Power/Rec LED will light and stop recording. It will back to stand-by mode.

Recording operation

Setting recording resolution

In stand-by mode , by pressing MODE button to switch the resolution option.

Resolution mode ▼

Quality	A	B	Recording mode
Best	On	On	1280 x 1024/ 8fps
High	On	Off	1280 x 1024/ 2fps
Medium	Off	On	640 x 480/ 30fps
Low	On	Off	640 x 480/ 15fps

Note:

1. After done the setting, please press " Power/Rec" to save.
2. If the video resolution is changed during it is recording, the file will be closed and produce a new file.
3. The file size will be varied by the different video qualities. The higher quality you select, the larger memory space will be taken.

Setting continuous overwrite recording

Note : As soon as the “Loop” recording light on the record is off , the continuous recording will be switched off. Please note that if the “Loop” light is in **ON** state , it won’ t record any more when its memory space is full.

After done the setting, please press ” Power/Rec” to save.

Mute mode

In stand-by mode > Long pressing Mode > One “beep” > Mute On

In mute mode > Long pressing Mode > One “beep” > Mute On

The sound warning function won't activate while it is in **Mute Mode** ; the warning function will present its status via LED blinks instead.

Lock controller

Lock up :

In stand-by mode >press the button until the LED blinks

> press the Mode > Beep sound > Locked up

Cancel lockup :

In Locked-up mode > press the button until the LED blinks >Press the Mode button short time > Beep sound > the lockup is canceled

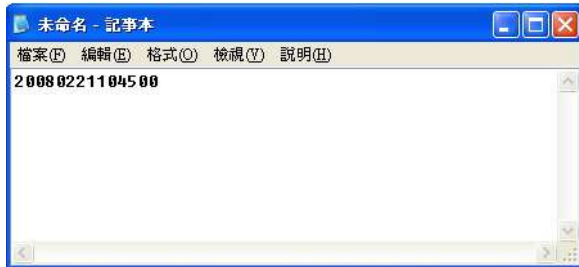
Note: In case of an invalid setting , the beeping will still sounds while it is in Mute Mode.

Setting time

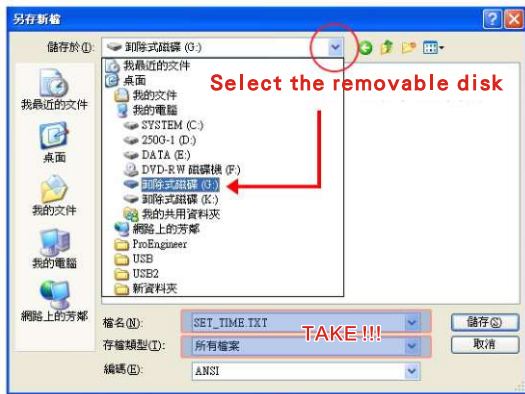
You will need to set up the time and date setting in order to show a correct time stamp on the video screen. Please follow the guidance as follows.

1. Insert the recorder into the Micro SD Card.
2. Connect the recorder to PC.
3. Click on the Start at bottom left corner of screen ; click on All programs , and Accessory , then click on notepad.
4. By setting up the time in the notepad.
Setting up the time format as follows.

2	0	0	8	0	2	2	1	1	0	4	5	0	0
Year				Month		Day		Hour		Minute		Second	



- After done the setting press file> save as
- Save the file name as “SET_TIME.txt” (the letter of the file name must be capitalized) , then find the Type as and save as “All files” , save the file in the Removable Disk.



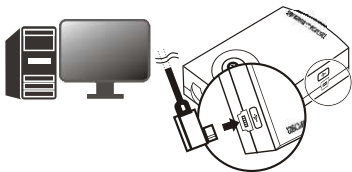
Note:

The removable drive (G:) will be differed when it is in different PC.

- Remove the recorder safely from computer.
- Turn off the recorder, the time setting is completed.

Connect to PC

By connecting the recorder to PC, it will appear a removable disk. You'll see the video files as named to be the format as Figure1(2).



▲ Connecting with PC

Note:

File name explanation 12011226.AVI

1	2	0	1	1	2	2	6
Month	Day	Hour	Minute				

(Figure 1)



(Figure 2)

Play the Video

The recording format is AVI , it can be played with Windows Media Player and others typical media player.

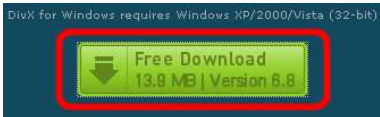
Note: The media player has to install a Xvid codec to play the movie file of the recorder. If your computer cannot play this video , please go to the Divx official website and download the Xvid-1.1.3-28062007.exe or higher version.

The user may need to install the Divx Codec in order to play the AVI movie files of the record. (You can download this Codec file at this website “ <http://www.Divx.com/divx/windows/download> ”

How to install the Codec :

Step 1 :

Download the Divx Codec



Step 2 :

Click on the **Start your download here.**

Thank you for choosing DivX for Windows!

Your download should begin immediately.

If it doesn't, you can manually [start your download here.](#)

Step 3 :

As soon as the download complete , click and install the codec file.



Step 4 :

In the installation , click **next** and follow the software installation instruction . As soon as the two icon appear on desktop , it means the nstallation is successfully completed.



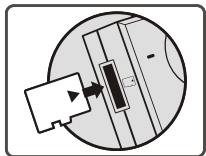
Specification

Specification	
Lens	Canon high-end quality lens
Camera angle	1.8mm wide-angle lens 、 view range : 101 degree
Resolution	1280 X 1024 or 640 X 480
Compression File Format	AVI , MPEG-4
viedo Resolution	4 selectable resolution : 1280X1024 @8 fpsec 、 1280X1024 @2fps 、 640X480 @30 fps 、 640X1024 @15fps
Memory Card	Micro SD card (Micro SD cards exceeds 4GB need to be with SDHC format)
Date & Time display	Yes
Continous Overwrite recording	Yes
Battery use time	Build-in 1100mAh (can continuously record 3.5 hours) 3.7V long life Li-battery or USB charger for long time use
Car power supply	Special car charger adaptor
Working tmperature allowance	0~70 degree
Dimension	H x W x D 69 x49x20 (mm)
Accessories	Car windshield mount , Bicycle holder, Motorcycle holder (optional), AC charger Strap , Buckle , USB cable (short) , USB cable (long)

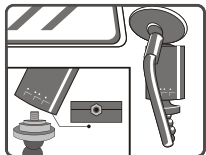
Recording Error

Error Sound	Error Display	Status	Explanation
“BEEP”	Not changed	Power is down / ending	1. Please check the power cord and reconnect it gain Or 2. Please charge it immediately.
“BEEP” twice	Two blink	Memory card error	1. Please check the memory card it is connected well or not. Or 2. Please format the memory card before use it.
“BEEP” three times	Three blink	CMOS error	Please send back to the manufacturer.
“BEEP” four times	Four blink	Low battery Warning	Please recharge it immediately.

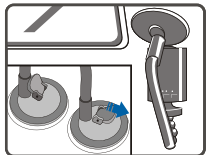
Installation instruction



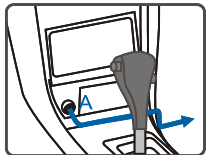
1. Insert the Micro SD memory card into the recorder.



2. To screw the recorder onto the mount.

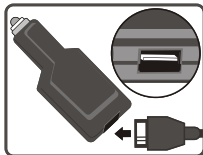
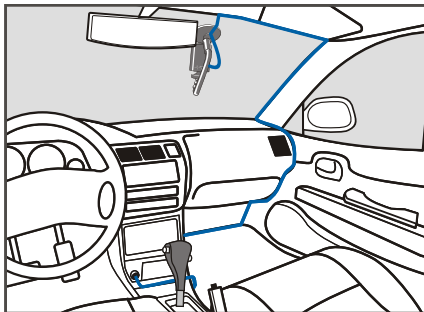


3. To suck the suction onto the windshield, and make sure it is steady, then pull the button down.

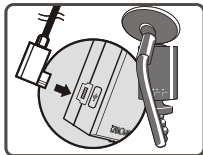


4. To connect the USB cable (A) to the car cigarette power supply.

▼ In-Car wiring diagram



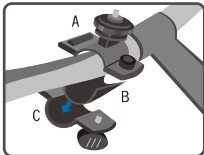
5. To Plug into the cigarette power supply.



6. At the last, connect the USB cable into the slot.

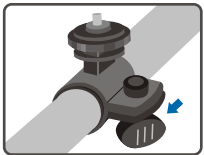
Installation instruction

1. Bicycle Bar Installation



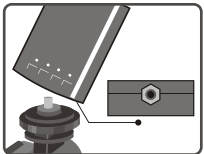
Please refer to step 1 2 of the Figure 1 , and put the pad onto the holder C. After done it , then assemble the holder A and C. (Refer to step 2 of the figure 1)

2. Bar Installation



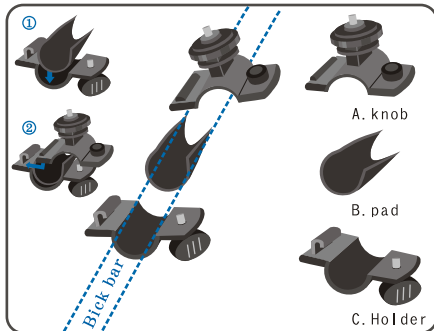
After putting the holder into place , screw the holder to make sure it firmly fixed.

3. Intall the recorder onto the mount

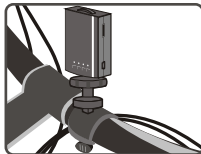


To screw the recordl onto the holder. Then to spin the knob to fix the record until it is firm.

▼ (Figure1) Install onto Bicycle bar



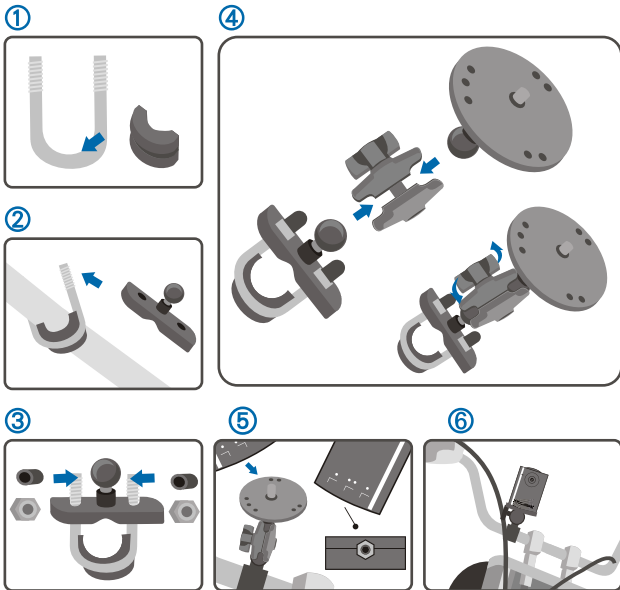
4. Installation Completed



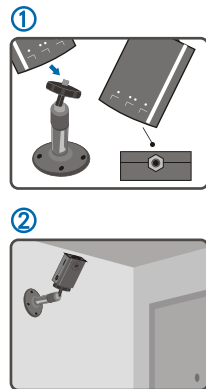
At the final , you can adjustthe angle of the record by adjusting the holder. And enjoy capturing the beautiful scenery.

optional accessories For Motorcycle

Motorcycle bar installation :



Surveillance Mount installation :



Q & A

Q : Can I change the setting when during it is recording ?

A : Yes. In recording , if you press MODE button , then AB LED indicator will change. By pressing the Mode button , and wait for 2 seconds , then the LED indicator will change. Please refer to page.8 to see the detailed operation method.

Q : Why does it take few seconds after press the rec button , and the LED just begin to Light on ?

A : While using large Micro SD Card , it will take few seconds to process, then the rec. LED indicator will flash.

Q : Why all LED keep flashing ?

A : It means the battery power is low , please chng it.

Q : Can't delete the files on the Micro SD card ?

A : Please close all windows , then try it again.

Q : There is in OS operation little noises on the screen when it was recording indoor.

A : In the indoor fluorescent lighting to the environmen , fluorescent lamp to the human eye will not feel the speed of flashing. Therefore , the noise in certain specific point in time will fill the screen flickering fluorescent cause the consequence.

Q : Why the previous setting didn't take effect ?

A : Settings will be retained only when the previous record of the state , If the stand-in settings to change when there is no implementation of the video , the settings will not be retained.

Print In Taiwan